

**RedZone<sup>TM</sup>**

What key  
judgement  
influences  
your choices?



**Traveling Abroad**



**Buying or Renting a Home**



**Daily Commute**



**Dining**



**Investing**



**Entertainment**



**Crime.**

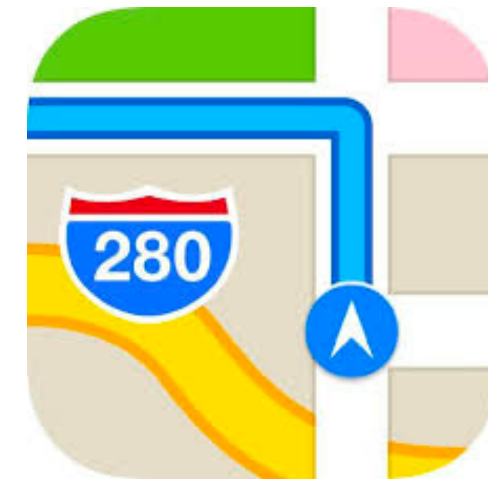
## POPULAR NAVIGATION APPS



Google Maps



**waze**



Apple Maps





# TYPICAL USES

Search Locations



Business & Places



Realtime Traffic



Navigation





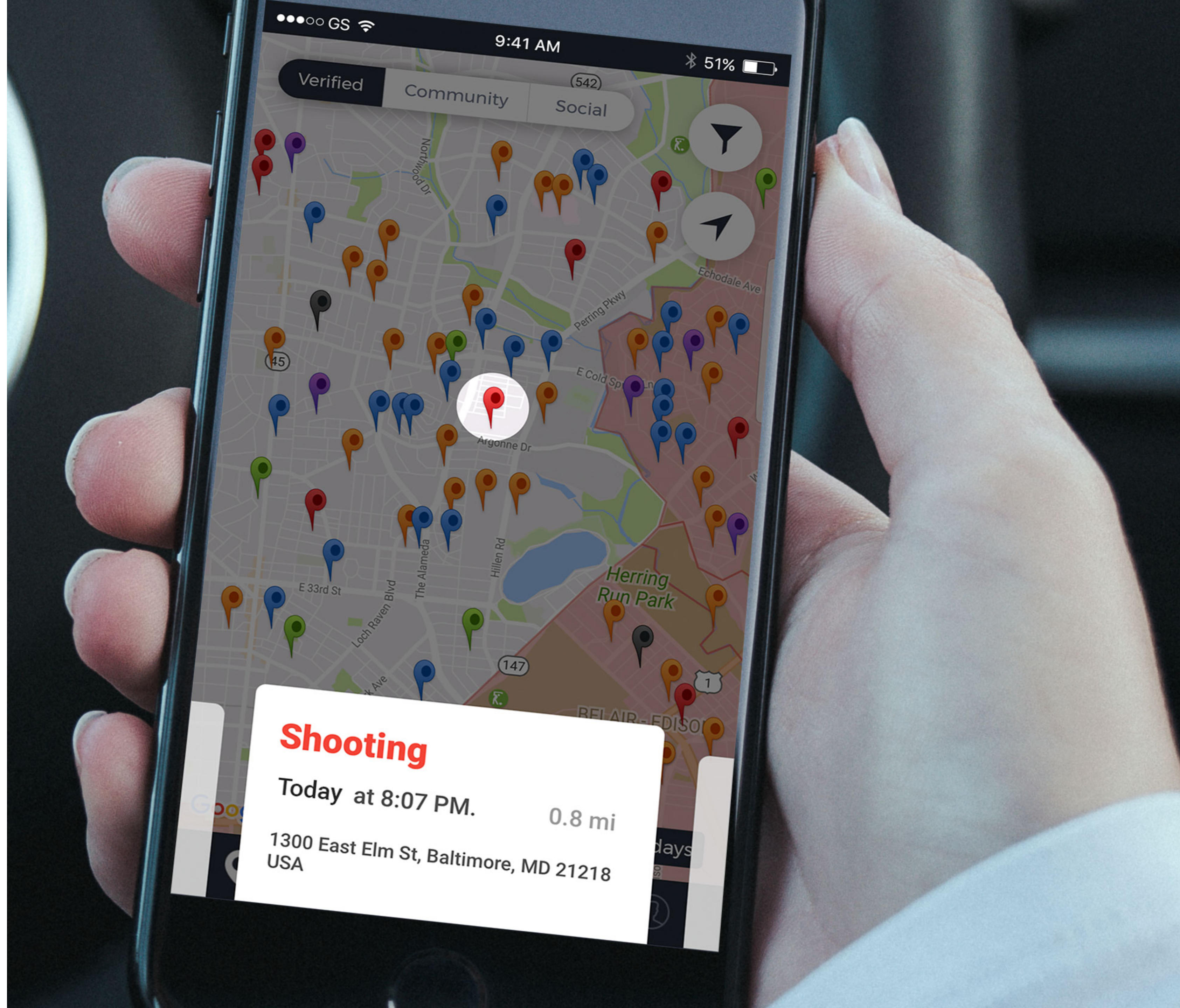


## WHAT IS MISSING?

- Crime Data
- Current Events
- Social Media
- Safety Tips
- Local News
- Crowdsourcing
- Live Interaction
- Personalization

The Solution?









Up-to-date

Combines real-time crime & social data with advanced GPS navigation capabilities



Location-based Alerts

A personalized alerting system that has your concerns and daily habits in mind



Peer to Peer

Crowdsourcing technology allows our users to report incidents of any kind



ON THE ROAD

Traffic

Police

Accident

Disabled

Hazard

Closure

IN THE COMMUNITY

Drugs

Prostitution

Homeless

Panhandling

Vandalism

Theft

Assault

Shooting

Burglary

Gang Activity

Sexual Assault

Map Chat

Suspicious

Trespassing

Crowd Act

C.S.I

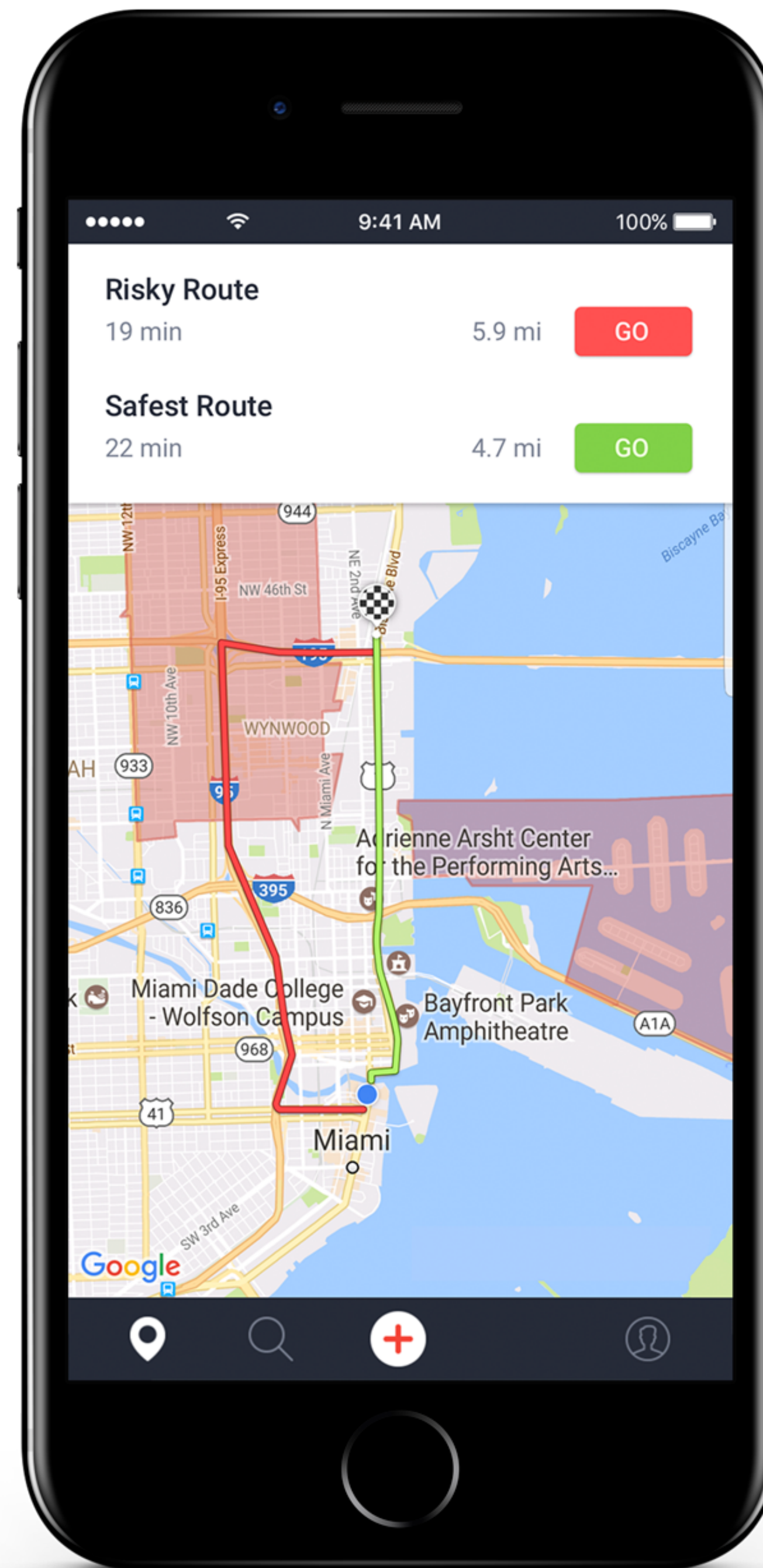
Fire

Paramedic



# The Safe Route™

It's simple. We invented a product that reduces the likelihood of you running into a situation that threatens your personal wellbeing.



## Unprecedented Data

We have over 3 million records of US crime data from the past 7 months that are factored into your route.



## Self-learning Algorithm

Your route is based on your preferences and your driving habits. The more you drive, the smarter your routes become.



## Real-time Adaption

Unordinary events happen. That's why we give you the option to redirect based on an imminent threat that may lay ahead.

# Vast Data Sources

3 million data entries in 7 months from 1,500 resources spanning the U.S. and covering more than 1,250 cities



## Governments

Local, state and national law enforcement and fire and rescue agencies



## Private Enterprises

Private and third-party security organizations monitoring local neighborhoods and communities



## Global Press

Automated syndication of written media from around the world



## Social Media

Social media including Facebook and Twitter



## Traditional Media

TV, radio, print and other media outlets

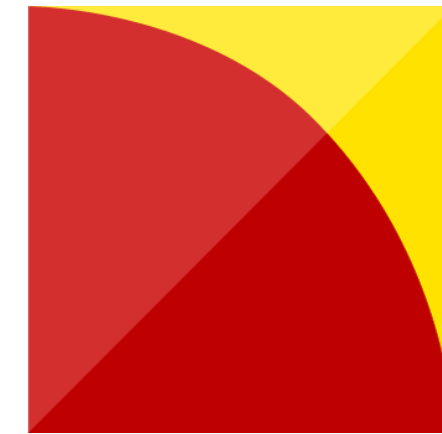


## Our User Community

First-hand reports that come directly from active users



# Innovating Big Data



Helios +  
Matheson





# Predicting Crime





# Main Objectives

## 1. Continual Aggregation

To develop a state-of-the-art AI system for Crime Prediction and Support

## 2. Resource Deployment

Provide data intelligence to —

- Law enforcement
- Real Estate
- Security Agencies
- Local Business
- New + Media Outlets
- Educational Institutions
- Public Services

# Sub-objectives

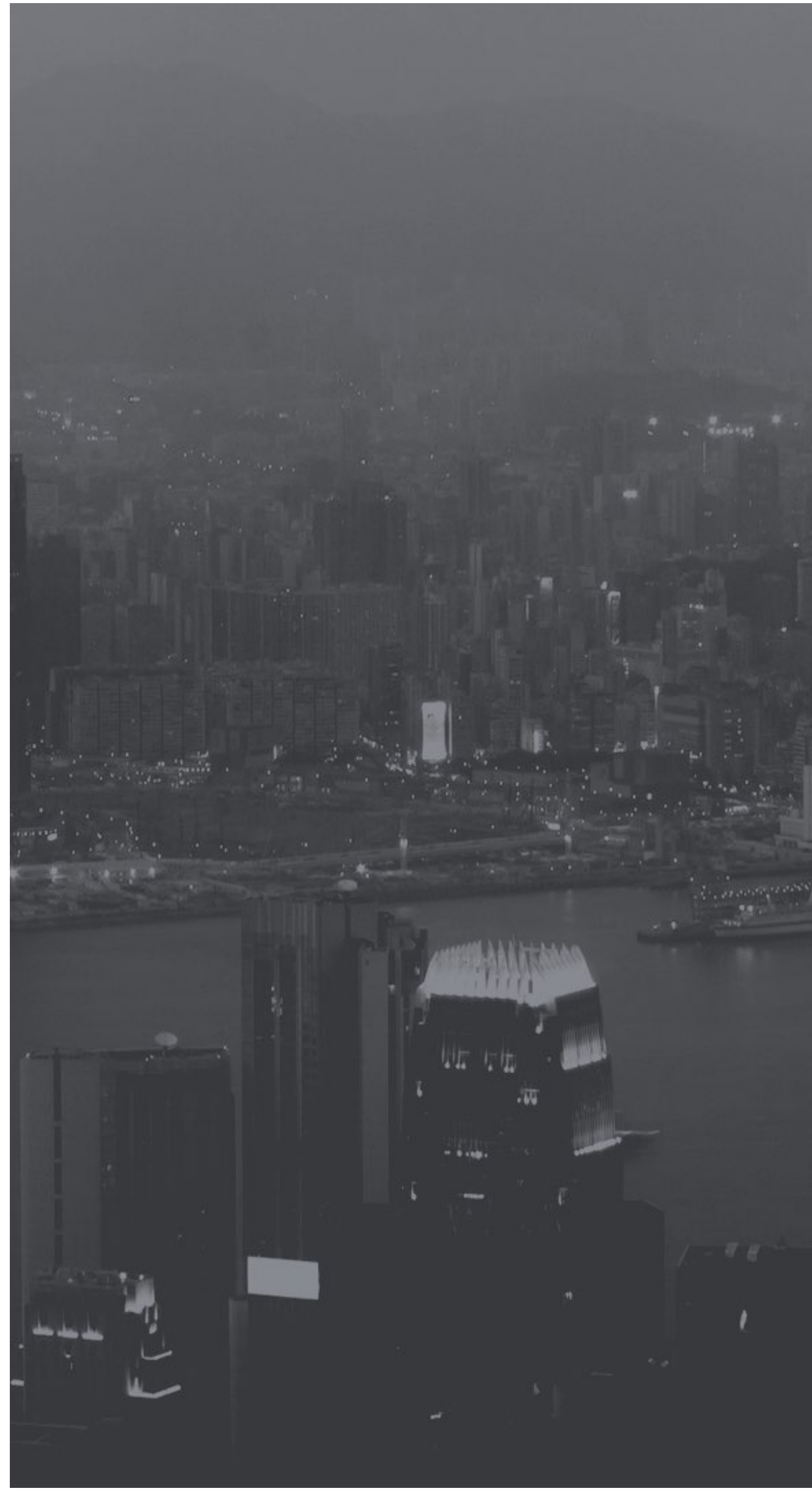
## 3. Get less technical

Invent basic terminologies that can be understood by the mass population(s)—  
Crime Velocity, Crime Trend, Flow, Flux, etc

## 4. Develop Metaphoric

Come up with basic terminologies that can be understood by an average user —

- Income Disparity
- Employment factor
- Financial Wealth
- Education level





# Crime Prediction Support System

Safe Travel Support

Crime Zone Surveillance

Law Enforcement  
Planning Advisor

Crime Alert System  
for Media + Apps

(KEY INDICATORS)



# CPSS Touchpoints

Crime Prediction Support System

## Safe Travel Support System:

RedZone Map CPSS module ensure that the already planned travel route is safe. If not, re-routing and alerting will notify the user to correct their course in light of potential hazards ahead.

## Crime Zone Surveillance System:

A full-fledged CPSS meant for keeping round the clock surveillance on crime zones so that the security forces can either prevent or confront expected (predicted) criminal or terrorist activities.

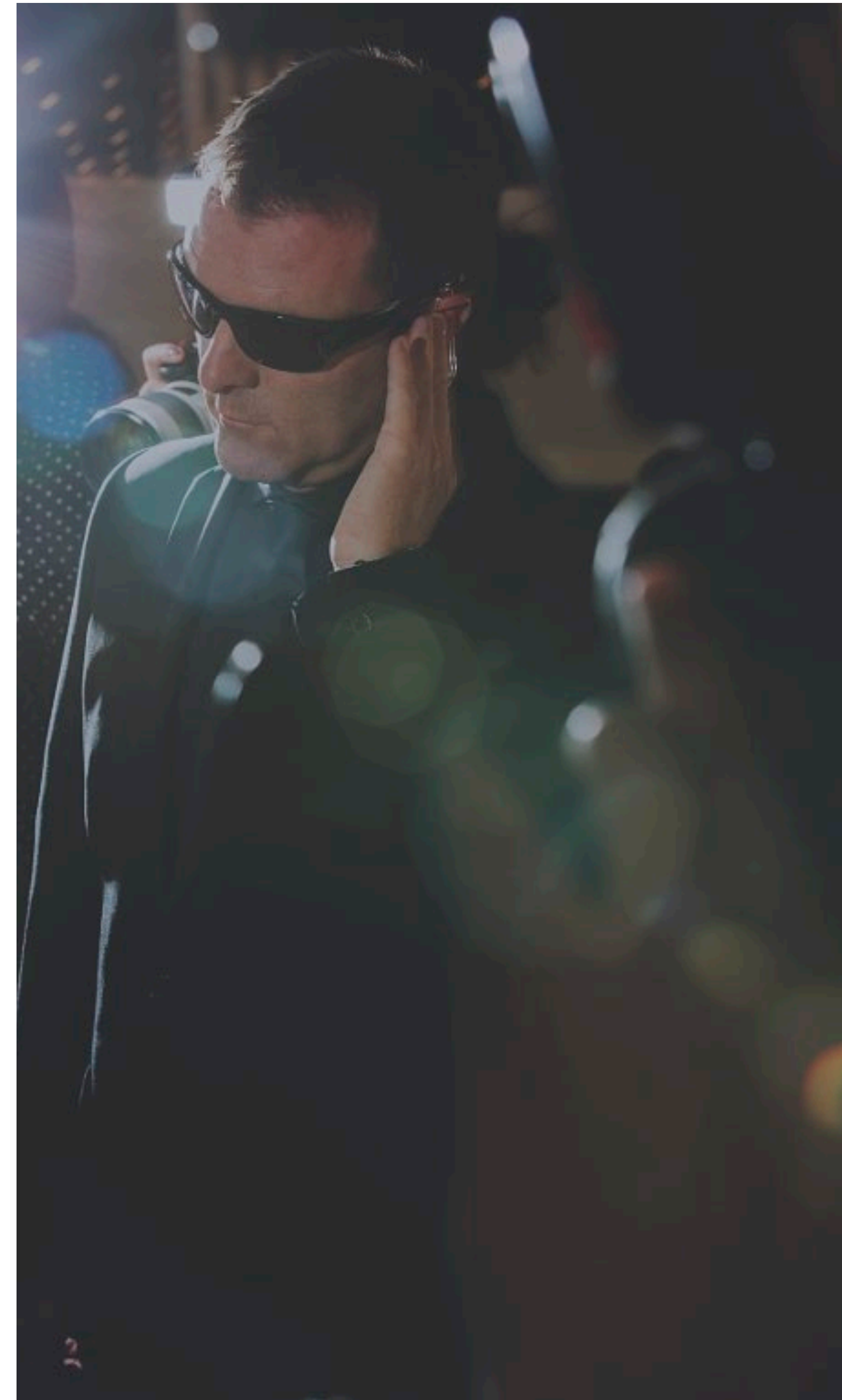
---

## Commando Engagement Advisor:

A well advanced cybernetic 'Control and Command' expert system that would help engage commandos to combat criminals and terrorists effectively for crime prevention or their elimination.

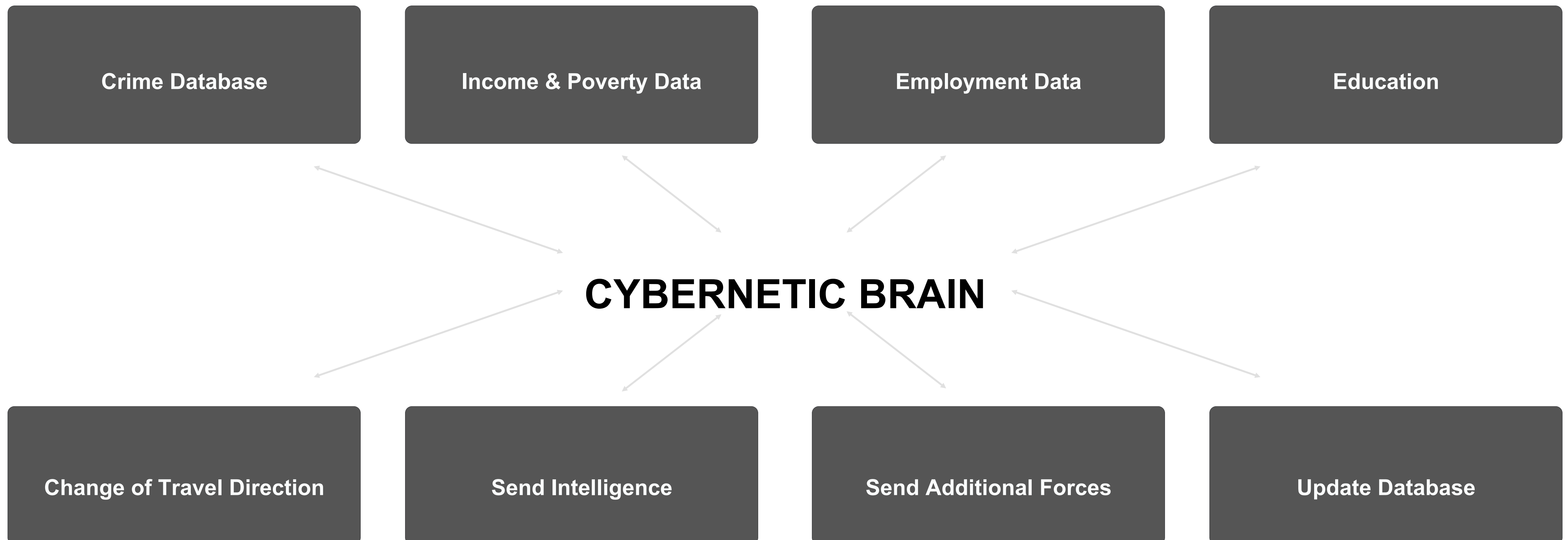
## Crime Alert System for Media:

A module of CPSS that would enable media to alert the public about possible criminal and terrorists activities.



# Self-learning Multiple Input & Output Control System

Powered by Machine Learning Rules





# LiveSlides web content

To view

**Download the add-in.**

[liveslides.com/download](https://liveslides.com/download)

**Start the presentation.**





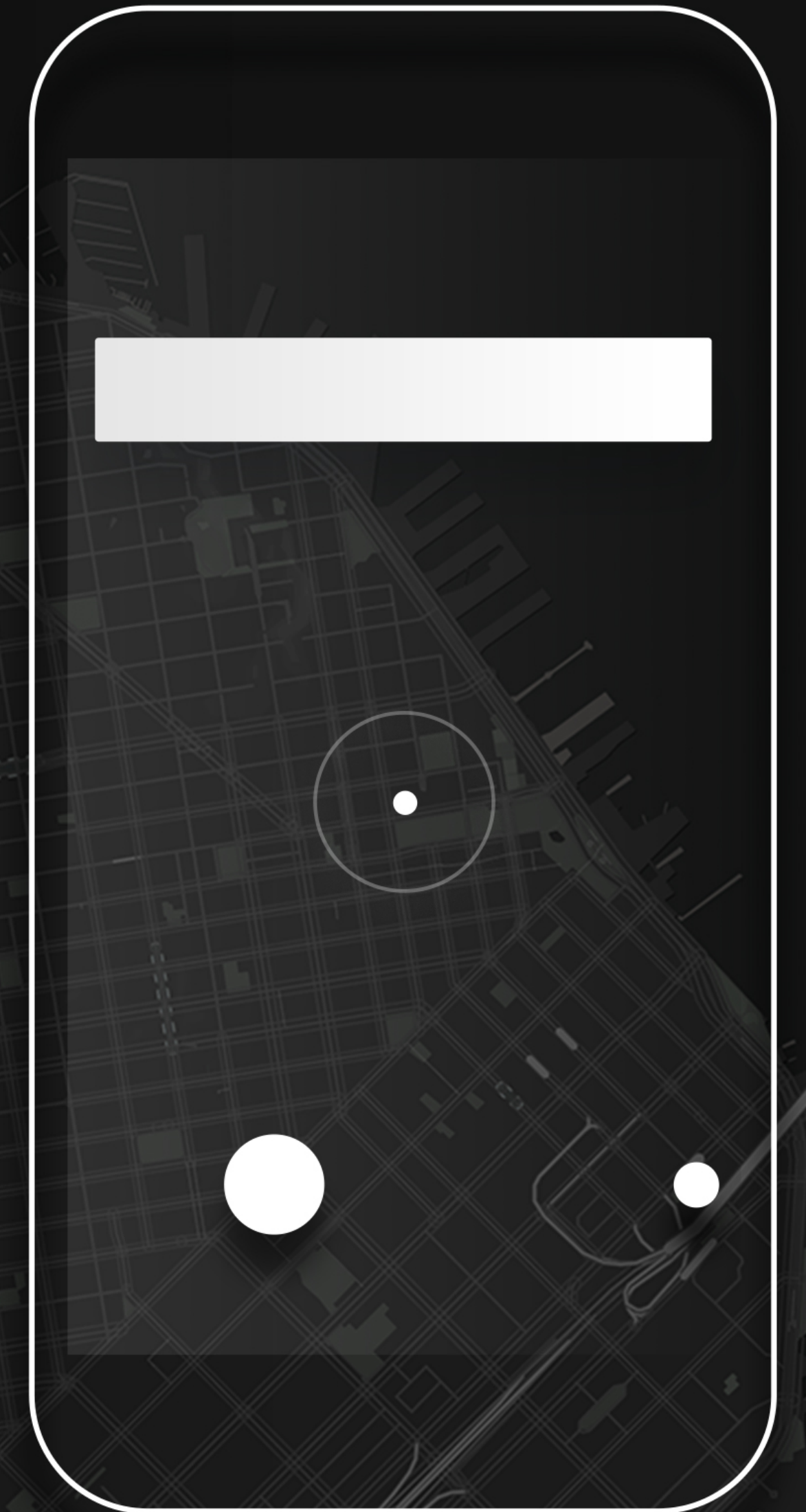
# ZONE

## INTELLIGENCE



*“We are here to define the next generation of global security and intelligence through big data, vast networks of tactical alliances, and machine learning that will benefit our users and clients around the world.”*

---







## Travel-related services

- Pre-travel threat assessment/Itinerary Vetting
- Pre-travel Security briefing
- Security Concierge (Asset on the ground)
- Customized routing/threat mitigation
- Incident alerts/guidance
- Tracking/monitoring of Travelers
- Bullet proof car
- Security trained driver
- Bodyguard(s)
- Event security planning
- College threat assessment/security mitigation





## Co-operative services

- Personal protection
- Office security
- Residential security architecture
- Abduction/Extortion/Stalking response
- Investigative due diligence
- Identity theft protection
- Adverse internet cleaning
- Document Incident analysis



